



INSTRUCTIONS: POPAR1

Floor Art Display

Mounted Art, Pallets, Lath, Barky Signs, Glitter, and Framed Art

Includes:

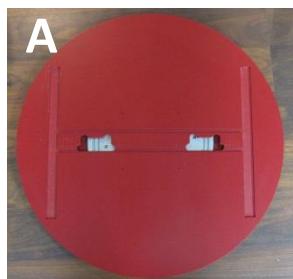
- A. Spinner Base (1)
- B. Side Panel Connector (1)
- C. Reinforcement Panels (2)
- D. Side Panels (2)
- E. Pegboards (2)
- F. Topper (1)
- G. Shelves (32)



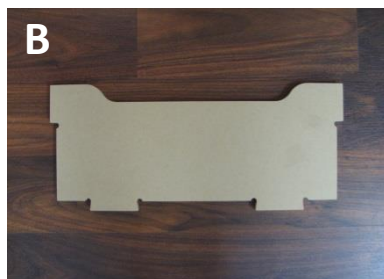
21"W x 60"H

Notes:

- Two person assembly
- Optional tools: rubber mallet, Phillips screwdriver
- For additional stability utilize wood glue when affixing side panels to spinner base.



Spinner Base



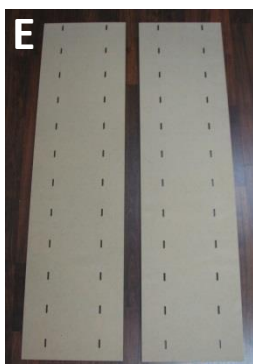
Side Panel Connector



Reinforcement Panels



Side Panels



Pegboards

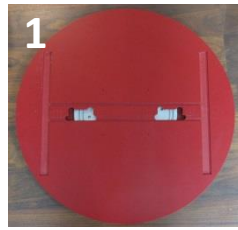


Topper



Shelf

1. Place Spinner Base (A) on the floor with slots facing up.



2. Tap the Side Panel Connector (B) into place on the base using a rubber mallet or by using one of the Reinforcement Panels (C).



Note: Properly line up the piece before tapping it into place. The Reinforcement Panel (C) must be flat against the base while tapping the Side Connector Panel (B) into place.

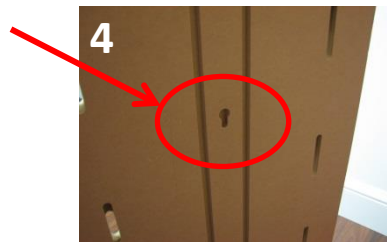
3. Place one of the Side Panels (D) into slot on base, then repeat for the second Side Panel (D).

Note: May need to slightly angle Side Panel (D) before sliding into place.



4. Line up the screw heads on the Reinforcement Panels (C) with the keyhole slots on the inside of the Side Panels (D). Once in, gently push towards the floor until it locks into place.

Note: If it does not slide down easily, use a Philips screwdriver to loosen or tighten the screw head. This piece should fit snugly.



5. Slide Pegboards (E) into the slots on the Side Panels (D).

Note: The top of the Pegboard (E) has the slots with the furthest distance to the edge. Display may need to be tilted for stores with lower ceilings to slide into place.



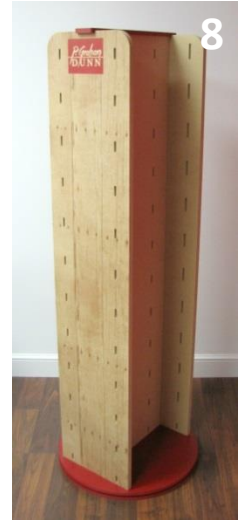
6. The Pegboards (E) should be level with the tops of the Side Panels (D). If they are not level, lightly tap or wiggle the bottoms of the Pegboards (E) until they slide into place.



7. Place Topper (F) on top of the Side Panels (D).
Note: This should go on easily if lined up with Pegboards (E) properly.



8. Congratulations! Display is ready to load with product.



Filling in Product:

1. Mounted Wall Art
2. Glitter Art
3. Pallet Wall Décor
4. Lath Wall Décor
5. Barky Signs
6. Framed Art



Note: When placing Shelves (G) on Pegboards (E) slide in at an angle.

